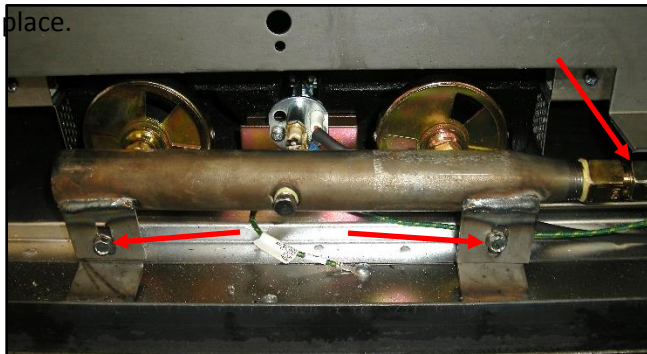


Gas Conversion Procedures / Non-Energy Star Convection Ovens

1. Remove power and turn the gas OFF to the oven.
2. Remove combustion cover below the oven doors and control cover on the right-hand side of oven.



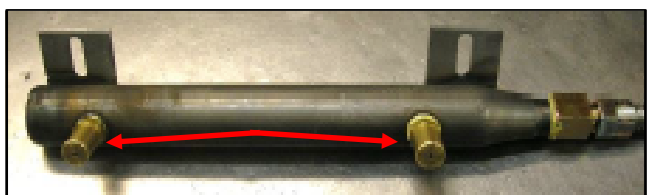
3. Disconnect the gas supply line to gas manifold and remove the two bolts that hold the gas manifold in place.



4. Remove pilot assembly and replace pilot orifice with new orifice supplied in gas conversion kit.



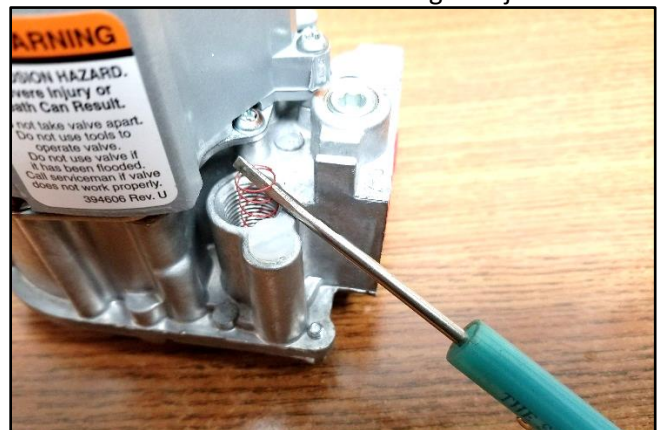
5. Re-install pilot assembly back into the oven.
6. Remove the two-brass main burner orifice and replace with the two-new orifice supplied in the gas conversion kit.



7. Re-install the gas manifold in oven. Reconnect the gas supply line to the manifold and install the 2 mounting bolts that retain the manifold in place.
8. In the control compartment, locate the gas valve and the adjustment port on the valve. Remove the adjustment port cover. Remove the gas pressure adjustment screw by turning it counter-clockwise until it comes out of the valve.



9. With a small screwdriver, pick the small spring out of the hole in the valve under the gas adjustment



10. Install the new spring and gas adjustment screw in the gas valve. Turn the screw clockwise all the way in until it bottoms out. Then turn the screw out counter-clockwise 5 turns.



BLODGETT

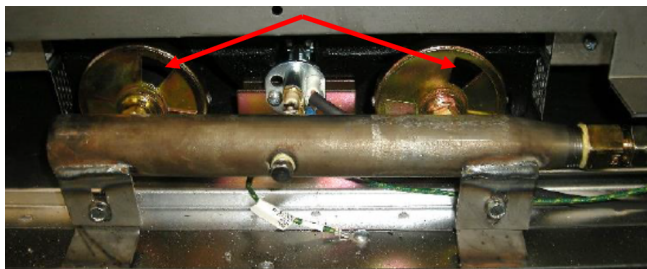
Technical Service Guide

Gas Conversion Procedures / Non-Energy Star Convection Ovens

11. Remove access port plug in gas valve and install gas manometer to measure incoming gas supply pressure. Turn the gas supply back on. It should not be more than 13.8 IN W.C. (3.45 kPa). If the gas pressure exceeds the MAX inlet pressure, speak to the customer about getting it corrected. If the gas pressure is within spec, reinstall the access port and continue to manifold pressure adjustment.

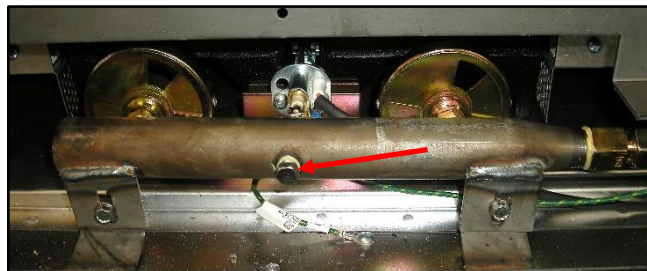


12. Adjust the air shutters for gas type. See Chart.



Oven Model	Type of Gas	Air Opening (Inches)
100-200 Series	Natural Gas	0.83
	Propane Gas	0.41
51 Series	Natural Gas	0.72
	Propane Gas	0.32

13. Remove the 1/8" pipe plug from the gas manifold and install a gas manometer.

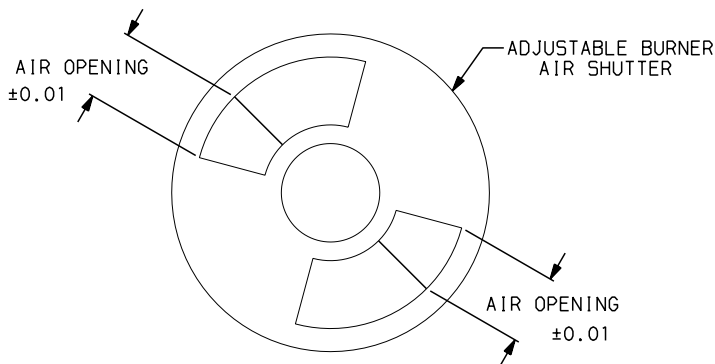
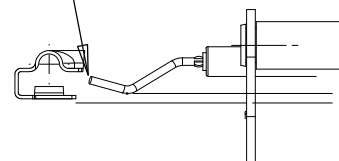


14. Connect power to the oven and turn it ON. You may have to cycle the power ON and OFF several times to bleed the air from the gas lines and have the pilot light.
15. Once the pilot lights, the main burners should come on. With the main burner lit, adjust the manifold gas pressure by turning the gas adjustment screw clockwise to increase pressure and counter-clockwise to decrease the pressure. The manifold gas pressure for Natural Gas is 3.5 IN W.C. (0.87 kPa) and LP Gas is 10.0 IN W.C. (2.50 kPa). Once you achieve the proper manifold gas pressure, cycle the oven OFF and back ON a few times to verify the adjustment. Install adjustment screw cover to gas valve.
16. Install the yellow gas conversion sticker supplied in spring kit for gas valve.



17. Remove manometer from the gas manifold and reinstall the 1/8" plug.
18. Disconnect power to the oven. Reinstall the control panel cover and combustion cover.
19. Turn the power ON and verify the oven lights.

.100 SPARK GAP



BLODGETT

Technical Service Guide